

KHAN Air Diaphragm Pump

1-1/2" METAL PUMPS (ALUMINUM)



Max Capacity : 380 LPM

Port Size : 1-1/2" x 1-1/2" Jis Flange

Air Inlet : 1/2" Female

Air Exhaust : 3/4" Female

Suction Lift : 6.1 m

Max. Particle Size : 6.2 mm

Max. Operating Pressure: 8.3 bar

Shipping Weights : 23.1kgs

ORDERING MENU

AT40 A PK - XX / XX / XX / XX - X

①

②

③

④

⑤

⑥

⑦

⑧

MATERIAL CODE

① PUMP SIZE

15 = 15A (1/2")
25 = 25A(1")
40 = 40A(1-1/2")
50 = 50A(2")

② HOUSING

A = ALUMINUM
S = SUS 316
AO = ALUMINUM OLD CHAMBER
P = POLYPROPYLENE
TF = TEFLON

③ CENTER SECTION

P = POLYPROPYLENE
(INTERNAL VALVE TYPE)
PK = POLYPROPYLENE
(EXTERNAL VALVE TYPE)

④ DIAPHRAGM

TF = TEFLON
BU = BACK-UP
NE = NEOPRENE
EP = EPDM
SA = SANTOPRENE
BN = BUNA-N
VT = VITON

⑤ CHECK BALL

TF = TEFLON
SA = SANTOPRENE
NE = NEOPRENE
EP = EPDM
BN = BUNA-N
VT = VITON

⑥ VALVE SEAT

TF = TEFLON
AL = ALUMINUM
SS = SUS 316
PP = POLYPROPYLENE

⑦ VALVE SEAT O-RING

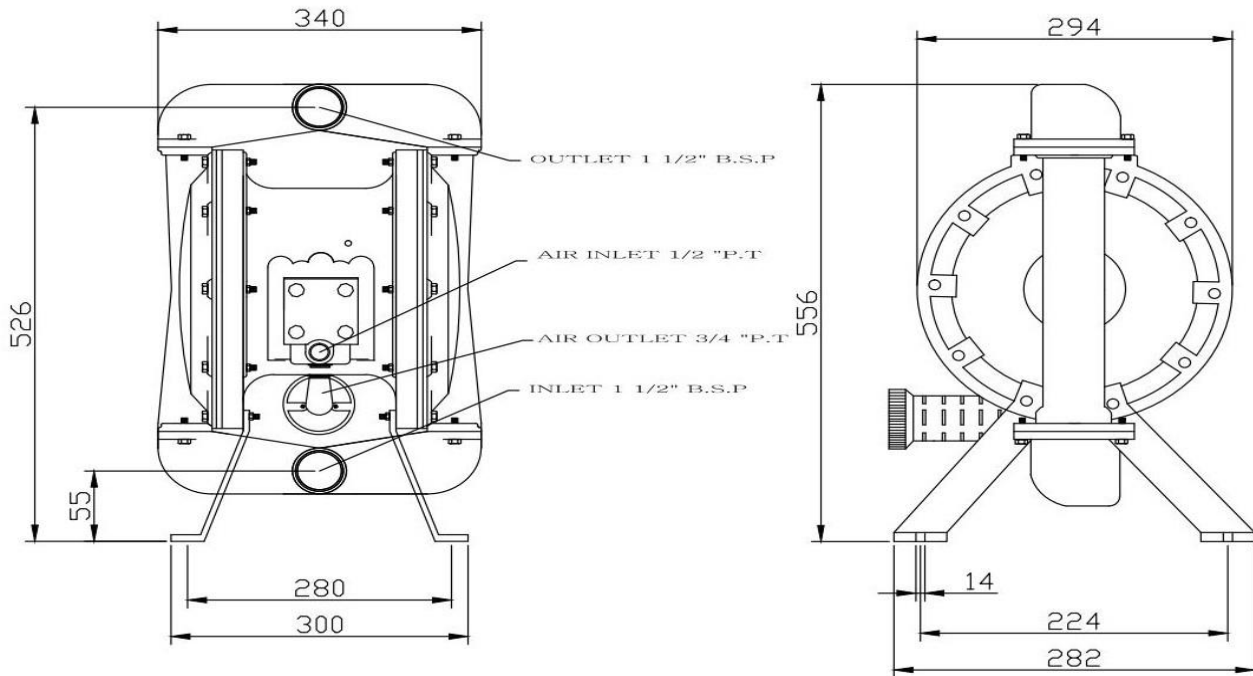
TF = TEFLON
NR = NATURAL RUBBER
EP = EPDM
VT = VITON

⑧ BASE TYPE

C = METAL PUMP
P = POLYPROPYLENE PUMP

AT40APK DIMENSION DATA

AT 40 APK (ALUMINUM PUMP)



AT40APK PERFORMANCE CHARTS

AT40APK Metal Pump

