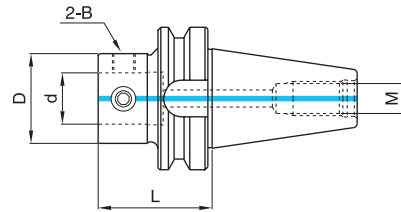


# EXT MODULAR SYSTEM

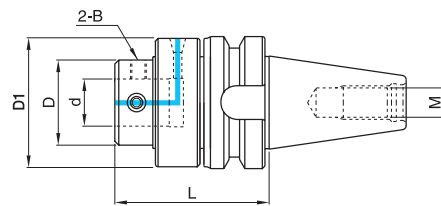
## BT-ETA / BT-OME



### ● MAS403 / BT EXT Standard Holder

#### ▶ BT-ETA

Code No.	치수 Dimension(mm)				부품 Component	
	D	d	L	M	B	
BT30-ETA-22045	40	22	45	M12	MTB-10145	
BT30-ETA-28055	50	28	55		MTB-12175	
BT40-ETA-22055	40	22	55	M16	MTB-10145	
BT40-ETA-28055	50	28	55		MTB-12175	
BT40-ETA-36055	63	36	55	M24	MTB-16225	
BT50-ETA-22065	40	22	65	M24	MTB-10145	
BT50-ETA-28070	50	28	70		MTB-12175	
BT50-ETA-36080	63	36	80		MTB-16225	
BT50-ETA-45080	80	45	80		MTB-16260	
BT50-ETA-55080	100	55	80		MTB-20330	



### ● MAS403 / BT EXT Modular Oil Feed Type

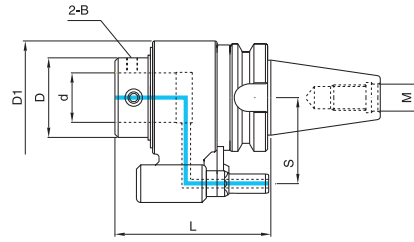
#### ▶ BT-OME

Code No.	치수 Dimension(mm)				부품 Component	
	d	L	D	D1	M	B
BT40-OME-22090	22	90	50	78	M16	MTB-10145
BT40-OME-28095	28	95	50	78		MTB-12175
BT40-OME-36100	36	100	65	98		MTB-16225
BT50-OME-22105	22	105	50	78	M24	MTB-10145
BT50-OME-28105	28	105	50	78		MTB-12175
BT50-OME-36120	36	120	65	98		MTB-16225
BT50-OME-45120	45	120	80	115		MTB-16260

※ 수동 내부 급유형 절삭유 공급 홀더로, 특수 씬을 장착하여 누유없이 장시간 운전이 가능합니다. (Max. 1800RPM/138페이지참조)

※ It is a manual type internal oil hole holder with a special seal capable of long term operation without leakage. (Max. 1800RPM/refer to page 138)





### ● MAS403 / BT EXT Modular Auto Matic Type

#### ▶ BT- OAE

Code No.	치수 Dimension(mm)						부품 Component
	d	L	D	D1	S	M	B
BT40-OAE-22110	22	110	55				MTB-10145
BT40-OAE-28115	28	115	55	80	65	M16	MTB-12175
BT40-OAE-36120	36	120	65				MTB-16225
BT50-OAE-22135	22	135	55				MTB-10145
BT50-OAE-28135	28	135	55	100	80	M24	MTB-12175
BT50-OAE-36145	36	145	65				MTB-16225
BT50-OAE-45145	45	145	80				MTB-16260

※ EXT 모듈타입을 사용하면 게이지라인에서의 거리가 짧고 원통 및 단면 구속으로 떨림을 최소화 할 수 있습니다.

※ 자동 툴체인지(ATC)가 가능한 툴홀더로, 사용 전에 위치결정핀(Position Pin) 높이와 각도를 맞추어 사용합니다. (139페이지)

※ 베어링과 내열, 내마모성이 우수한 씰(Seal)을 장착하여, 고속에서도 누유 없이 장시간 안정적인 운전이 가능합니다. (Max. 3,200RPM)

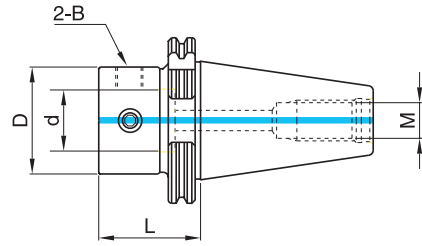
※ It is a tool holder capable of Automatic Tool Change (ATC). Adjust the height and angle of the Position Pin prior to use. (P.139)

※ It has a bearing and seal with outstanding heat-resistant and abrasion resistive properties, making it capable of stable operation for extended durations without leakage even in high speeds. (Max. 3,200RPM)



# EXT MODULAR SYSTEM

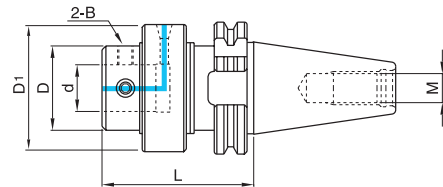
## SK-ETA / SK-OME



### ● DIN69871 / SK EXT Standard Type

#### ▶ SK-ETA

Code No.	치수 Dimension(mm)				부품 Component
	D	d	L	M	B
SK40-ETA-22045	40	22	45	M16	MTB-10145
SK40-ETA-28050	50	28	50		MTB-12175
SK40-ETA-36065	63	36	65		MTB-16225
SK50-ETA-22045	40	22	45	M24	MTB-10145
SK50-ETA-28050	50	28	50		MTB-12175
SK50-ETA-36060	63	36	60		MTB-16225
SK50-ETA-45060	80	45	60		MTB-16260



### ● DIN69871 / SK EXT Modular Oil Feed Type

#### ▶ SK-OME

Code No.	치수 Dimension(mm)				부품 Component	
	d	L	D	D1	M	B
SK40-OME-22095	22	95	50	78	M16	MTB-10145
SK40-OME-28100	28	100	50	78		MTB-12175
SK40-OME-36105	36	105	65	98		MTB-16225
SK50-OME-22090	22	90	50	78	M24	MTB-10145
SK50-OME-28105	28	105	50	78		MTB-12175
SK50-OME-36105	36	105	65	98		MTB-16225
SK50-OME-45105	45	105	80	115		MTB-16260

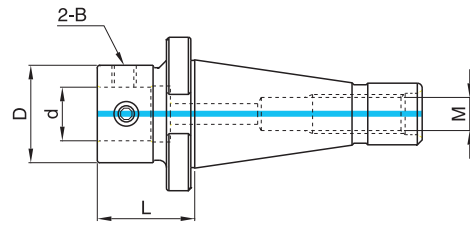
※ 수동 내부 급유형 절삭유 공급 홀더로, 특수 씬을 장착하여 누유없이 장시간 운전이 가능합니다. (Max. 1800RPM/138페이지참조)

※ It is a manual type internal oil hole holder with a special seal capable of long term operation without leakage. (Max. 1800RPM/refer to page 138)



# EXT MODULAR SYSTEM

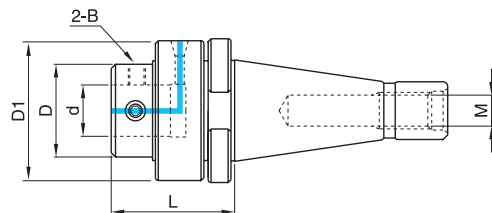
## NT-ETA / NT-OME



### ● DIN2080 / NT EXT Standard Holder Type

#### ▶ NT-ETA

Code No.	치수 Dimension(mm)				부품 Component
	D	d	L	M	
NT40-ETA-22040	40	22	40	5/8"-11UNC	MTB-10145
NT40-ETA-28045	50	28	45		MTB-12175
NT40-ETA-36065	63	36	65		MTB-16225
NT50-ETA-28055	50	28	55	1"-8UNC	MTB-12175
NT50-ETA-36060	63	36	60		MTB-16225
NT50-ETA-45060	80	45	60		MTB-16260
NT40-ETA-22040M	40	22	40	M16	MTB-10145
NT40-ETA-28045M	50	28	45		MTB-12175
NT40-ETA-36065M	63	36	65		MTB-16225
NT50-ETA-28055M	50	28	55	M24	MTB-12175
NT50-ETA-36060M	63	36	60		MTB-16225
NT50-ETA-45060M	80	45	60		MTB-16260



### ● DIN2080 / NT EXT Modular Oil Feed Type

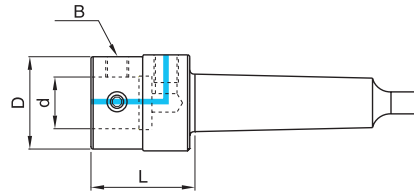
#### ▶ NT-OME

Code No.	치수 Dimension(mm)				부품 Component	
	d	L	D	D1		
NT40-OME-22075	22	75	50	78	5/8"-11UNC	MTB-10145
NT40-OME-28080	28	80	50	78		MTB-12175
NT40-OME-36090	36	90	65	98		MTB-16225
NT50-OME-22080	22	80	50	78	1"-8UNC	MTB-10145
NT50-OME-28080	28	80	50	78		MTB-12175
NT50-OME-36090	36	90	65	98		MTB-16225
NT50-OME-45090	45	90	80	115	MTB-16260	
NT40-OME-22075M	22	75	50	78	M16	MTB-10145
NT40-OME-28080M	28	80	50	78		MTB-12175
NT40-OME-36090M	36	90	65	98		MTB-16225
NT50-OME-22080M	22	80	50	78	M24	MTB-10145
NT50-OME-28080M	28	80	50	78		MTB-12175
NT50-OME-36090M	36	90	65	98		MTB-16225
NT50-OME-45090M	45	90	80	115	MTB-16260	



# EXT MODULAR SYSTEM

## MT-ETA / MT-OME



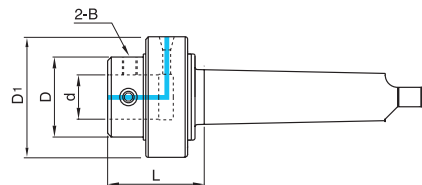
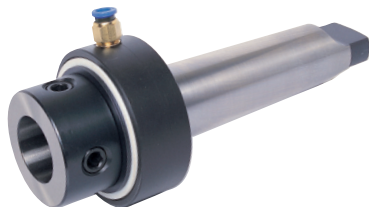
### ● DIN228B / MT EXT Standard Type

#### ▶ MT-ETA

Code No.	치수 Dimension(mm)			부품 Component
	D	d	L	B
MT4-ETA-22045	40	22	45	MTB-10145
MT4-ETA-28060	50	28	60	MTB-12175
MT4-ETA-36065	63	36	65	MTB-16225
MT5-ETA-22045	40	22	45	MTB-10145
MT5-ETA-28060	50	28	60	MTB-12175
MT5-ETA-36065	63	36	65	MTB-16225
MT5-ETA-45075	80	45	75	MTB-16260
MT6-ETA-36065	63	36	65	MTB-16225
MT6-ETA-45075	80	45	75	MTB-16260

※ 코터홈이 있는 경우 별도 지정해 주시기 바랍니다.

※ If a COTTER HOME is present, please make a separate assignment.



### ● DIN228B / MT EXT Modular Oil Feed Type

#### ▶ MT-OME

Code No.	치수 Dimension(mm)				부품 Component
	d	L	D	D1	B
MT4-OME-22065	22	65	50	78	MTB-10145
MT4-OME-28075	28	75	50	78	MTB-12175
MT4-OME-36080	36	80	65	98	MTB-16225
MT5-OME-22065	22	65	50	78	MTB-10145
MT5-OME-28075	28	75	50	78	MTB-12175
MT5-OME-36080	36	80	65	98	MTB-16225
MT5-OME-45085	45	85	80	115	MTB-16260
MT6-OME-22070	22	70	50	78	MTB-10145
MT6-OME-28075	28	75	50	78	MTB-12175
MT6-OME-36085	36	85	65	98	MTB-16225
MT6-OME-45085	45	85	80	115	MTB-16260

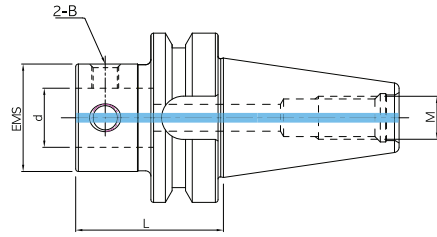
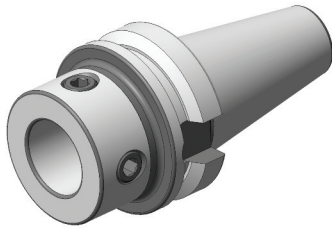
※ 수동 내부 급유형 절삭유 공급 홀더로, 특수 씬을 장착하여 누유없이 장시간 운전이 가능합니다. (Max. 1800RPM/138페이지참조)

※ It is a manual type internal oil hole holder with a special seal capable of long term operation without leakage. (Max. 1800RPM/refer to page 138)



# EMS MODULAR SYSTEM

## BT-ETA MODULAR ARBOR

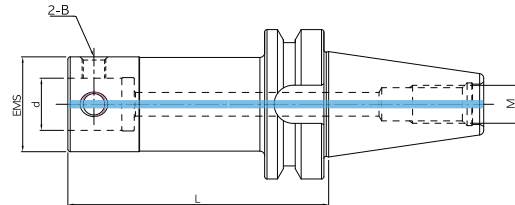
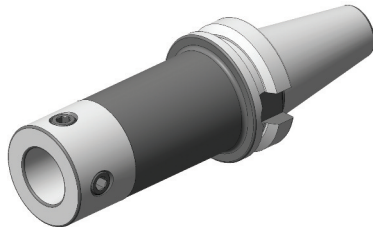


- MAS403 / BT EMS Standard Type Holder
- ▶ BT-ETA (standard)

Group	Code No.	치수 Dimension(mm)				부품 Component	
		EMS	d	L	M	B	
EMS25	BT40-ETA-14050	25	14	50	M16	MTB-06085	
EMS32	BT40-ETA-18055	32	18	55		MTB-08115	
EMS40	BT40-ETA-22055	40	22	55		MTB-10145	
EMS50	BT40-ETA-28055	50	28	55		MTB-12175	
EMS25	BT50-ETA-14060	25	14	60	M24	MTB-06085	
EMS32	BT50-ETA-18065	32	18	65		MTB-08115	
EMS40	BT50-ETA-22065	40	22	65		MTB-10145	
EMS50	BT50-ETA-28070	50	28	70		MTB-12175	
EMS63	BT50-ETA-36080	63	36	80		MTB-16225	
EMS80	BT50-ETA-45080	80	45	80		MTB-16260	

※ EMS모듈러 스탠다드타입 홀더는 보링툴 홀더이며, EXT모듈러 드릴(MCD,TMD)과도 호환이 됩니다.

※ EMS Modular Standard Type Holder is used for boring tools, and it is interchangeable with EXT Modular Drills (MCD, TMD).



- MAS403 / BT EMS Long Type Holder
- ▶ BT-ETA (Long)

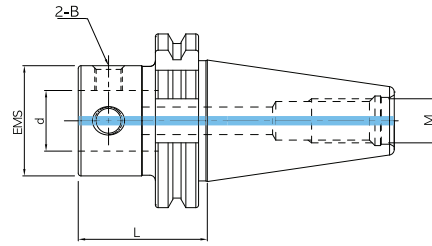
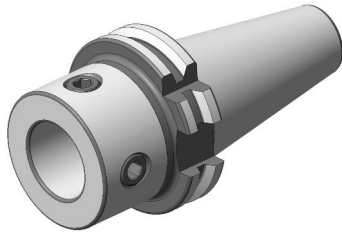
Group	Code No.	치수 Dimension(mm)				부품 Component	
		EMS	d	L	M	B	
EMS25	BT40-ETA-14080	25	14	80	M16	MTB-06085	
EMS32	BT40-ETA-18095	32	18	95		MTB-08115	
EMS40	BT40-ETA-22110	40	22	110		MTB-10145	
EMS50	BT40-ETA-28130	50	28	130		MTB-12175	
EMS25	BT50-ETA-14090	25	14	90	M24	MTB-06085	
EMS32	BT50-ETA-18105	32	18	105		MTB-08115	
EMS40	BT50-ETA-22120	40	22	120		MTB-10145	
EMS50	BT50-ETA-28140	50	28	140		MTB-12175	
EMS63	BT50-ETA-36165	63	36	165		MTB-16225	
EMS80	BT50-ETA-45200	80	45	200		MTB-16260	

※ EMS모듈러 롱타입 홀더는 보링툴 홀더이며, EXT모듈러 드릴(MCD,TMD)용으로는 사용하지 마십시오..

※ EMS Modular Long Type Holder is used for boring tools, and please do not use for EXT Modular Drills (MCD, TMD).



# EXT MODULAR SYSTEM SK-ETA MODULAR ARBOR

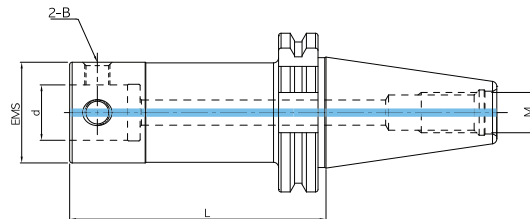
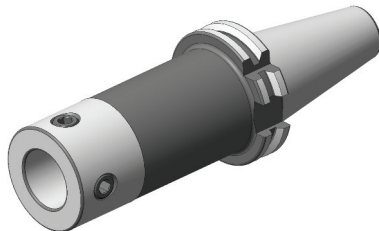


● DIN69871 / SK EMS Standard Type Holder  
▶ SK-ETA (Standard)

Group	Code No.	치수 Dimension(mm)				부품 Component	
		EMS	d	L	M	B	
EMS25	SK40-ETA-14040	25	14	40	M16	MTB-06085	
EMS32	SK40-ETA-18045	32	18	45		MTB-08115	
EMS40	SK40-ETA-22045	40	22	45		MTB-10145	
EMS50	SK40-ETA-28050	50	28	50		MTB-12175	
EMS25	SK50-ETA-14040	25	14	40	M24	MTB-06085	
EMS32	SK50-ETA-18045	32	18	45		MTB-08115	
EMS40	SK50-ETA-22045	40	22	45		MTB-10145	
EMS50	SK50-ETA-28050	50	28	50		MTB-12175	
EMS63	SK50-ETA-36060	63	36	60		MTB-16225	
EMS80	SK50-ETA-45060	80	45	60		MTB-16260	

※ EMS모듈러 스탠다드타입 홀더는 보링툴 홀더이며, EXT모듈러 드릴(MCD,TMD)과도 호환이 됩니다.

※ EMS Modular Standard Type Holder is used for boring tools, and it is interchangeable with EXT Modular Drills (MCD, TMD).



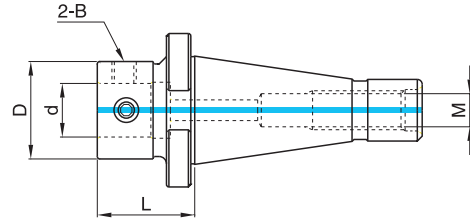
● DIN69871 / SK EMS Long Type Holder  
▶ SK-ETA (Long)

Group	Code No.	치수 Dimension(mm)				부품 Component	
		EMS	d	L	M	B	
EMS25	SK40-ETA-14070	25	14	70	M16	MTB-06085	
EMS32	SK40-ETA-18085	32	18	85		MTB-08115	
EMS40	SK40-ETA-22100	40	22	100		MTB-10145	
EMS50	SK40-ETA-28120	50	28	120		MTB-12175	
EMS25	SK50-ETA-14070	25	14	70	M24	MTB-06085	
EMS32	SK50-ETA-18085	32	18	85		MTB-08115	
EMS40	SK50-ETA-22100	40	22	100		MTB-10145	
EMS50	SK50-ETA-28120	50	28	120		MTB-12175	
EMS63	SK50-ETA-36145	63	36	145		MTB-16225	
EMS80	SK50-ETA-45180	80	45	180		MTB-16260	

※ EMS모듈러 롱타입 홀더는 보링툴 홀더이며, EXT모듈러 드릴(MCD,TMD)용으로는 사용하지 마십시오..

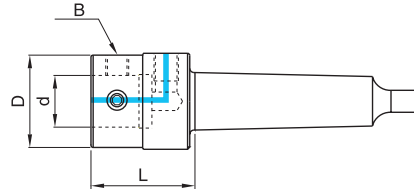
※ EMS Modular Long Type Holder is used for boring tools, and please do not use for EXT Modular Drills (MCD, TMD).





● DIN2080 / NT EMS Standard Type Holder  
▶ NT-ETA

Group	Code No.	치수 Dimension(mm)				부품 Component	
		EMS	d	L	M	B	
EMS40	NT40-ETA-22040	40	22	40	5/8"-11UNC	MTB-10145	
EMS50	NT40-ETA-28045	50	28	45		MTB-12175	
EMS63	NT40-ETA-36065	63	36	65		MTB-16225	
EMS50	NT50-ETA-28055	50	28	55	1"-8UNC	MTB-12175	
EMS63	NT50-ETA-36060	63	36	60		MTB-16225	
EMS80	NT50-ETA-45060	80	45	60		MTB-16260	
EMS40	NT40-ETA-22040M	40	22	40	M16	MTB-10145	
EMS50	NT40-ETA-28045M	50	28	45		MTB-12175	
EMS63	NT40-ETA-36065M	63	36	65		MTB-16225	
EMS50	NT50-ETA-28055M	50	28	55	M24	MTB-12175	
EMS63	NT50-ETA-36060M	63	36	60		MTB-16225	
EMS80	NT50-ETA-45060M	80	45	60		MTB-16260	



● DIN228B / MT EMS Standard Type Holder  
▶ MT-ETA

Group	Code No.	치수 Dimension(mm)			부품 Component	
		EMS	d	L	B	
EMS40	MT4-ETA-22045	40	22	45	MTB-10145	
EMS50	MT4-ETA-28060	50	28	60	MTB-12175	
EMS63	MT4-ETA-36065	63	36	65	MTB-16225	
EMS40	MT5-ETA-22045	40	22	45	MTB-10145	
EMS50	MT5-ETA-28060	50	28	60	MTB-12175	
EMS63	MT5-ETA-36065	63	36	65	MTB-16225	
EMS80	MT5-ETA-45075	80	45	75	MTB-16260	
EMS63	MT6-ETA-36065	63	36	65	MTB-16225	
EMS80	MT6-ETA-45075	80	45	75	MTB-16260	

※ 코터홈이 있는 경우 별도 지정해 주시기 바랍니다.

※ If a COTTER HOME is present, please make a separate assignment.

