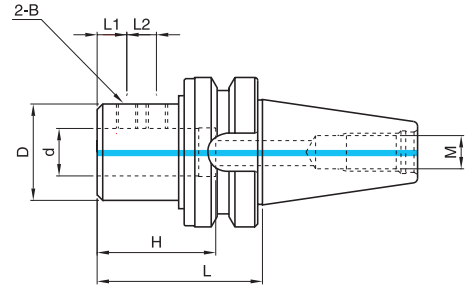


SIDE LOCK ARBOR (STANDARD)

BT-SLA / BT-OMS



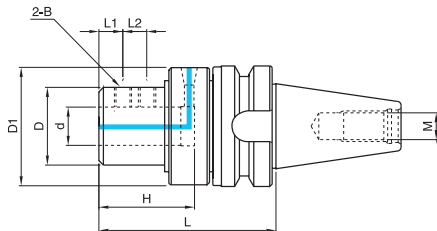
● MAS403 / BT side Lock Type

▶ BT-SLA

Code No.	치수 Dimension(mm)							부품 Component
	d	L	D	H	L1	L2	M	B
BT40-SLA-32090	32	90	65	70	20	20	M16	M1616SS
BT40-SLA-40105	40	105	70	80	20	25		M1616SS
BT50-SLA-20105	20	105	50	50	20	-	M24	M1215SS
BT50-SLA-25105	25	105	50	60	20	20		M1215SS
BT50-SLA-32105	32	105	65	70	20	20		M1415SS
BT50-SLA-40105	40	105	80	80	20	25		M1620SS
BT50-SLA-50130	50	130	90	100	35	35		M2020SS

※ 스피들 내부의 절삭유 공급이 가능한 장비에서 효율적으로 사용할 수 있습니다.

※ It can be used efficiently in equipment capable of cutting oil injection inside the spindle.



기본구성품(Basic Component)



● MAS403 / BT side Lock Oil Feed Type

▶ BT-OMS

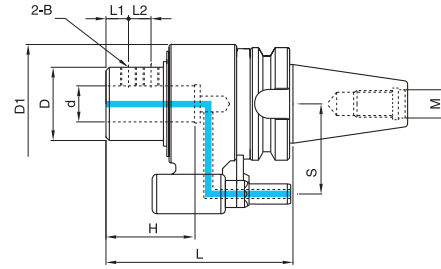
Code No.	치수 Dimension(mm)								부품 Component
	d	L	D	D1	H	L1	L2	M	B
BT40-OMS-20105	20	105	50	78	50	20	-	M16	M1215SS
BT40-OMS-25120	25	120	50	78	60	20	20		M1215SS
BT40-OMS-32125	32	125	65	98	70	20	20		M1415SS
BT50-OMS-20120	20	120	50	78	50	20	-	M24	M1215SS
BT50-OMS-25135	25	135	50	78	60	20	20		M1215SS
BT50-OMS-32135	32	135	65	98	70	20	20		M1415SS
BT50-OMS-40145	40	145	65	98	80	20	25		M1616SS
BT50-OMS-50170	50	170	90	123	90	35	35		M2020SS

※ 수동 내부 급유형 절삭유 공급 홀더로, 특수 씬을 장착하여 누유없이 장시간 운전이 가능합니다. (Max. 1,800RPM/138페이지참조)

※ It is a manual type internal oil hole holder with a special seal capable of long term operation without leakage. (Max. 1,800RPM/refer to page 138)



SIDE LOCK ARBOR (STANDARD) BT-OAS



● MAS403 / BT side Lock Auto Matic Type

▶ BT-OAS

Code No.	치수 Dimension(mm)								부품 Component
	d	L	H	L1	L2	D	D1	S	B
BT40-OAS-20120	20	120	50	20	-	55	80	65	M1215SS
BT40-OAS-25140	25	140	60	20	20	55	80		M1215SS
BT40-OAS-32140	32	140	70	20	20	65	80		M1415SS
BT50-OAS-20145	20	145	50	20	-	55	100	80	M1215SS
BT50-OAS-25165	25	165	60	20	20	55	100		M1215SS
BT50-OAS-32165	32	165	70	20	20	65	100		M1415SS
BT50-OAS-40175	40	175	80	20	25	65	100		M1616SS

※ 자동 톨체인지(ATC)가 가능한 톨홀더로, 사용 전에 위치결정핀(Position Pin) 높이와 각도를 맞추어 사용합니다. (139페이지)

※ 베어링과 내열, 내마모성이 우수한 씬(Seal)을 장착하여, 고속에서도 누유 없이 장시간 안정적인 운전이 가능합니다. (Max. 3,200RPM)

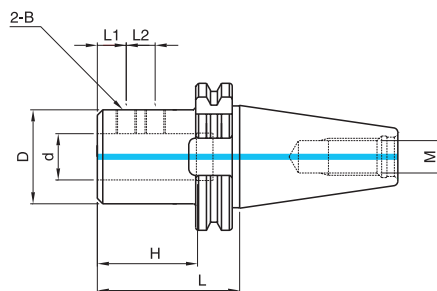
※ It is a tool holder capable of Automatic Tool Change (ATC). Adjust the height and angle of the Position Pin prior to use. (P.139)

※ It has a bearing and seal with outstanding heat-resistant and abrasion resistive properties, making it capable of stable operation for extended durations without leakage even in high speeds. (Max. 3,200RPM)



SIDE LOCK ARBOR (STANDARD)

SK-SLA / SK-OMS



● DIN69871 / SK Side Lock Type

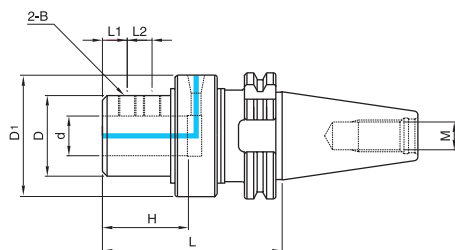
▶ SK-SLA

Code No.	치수 Dimension(mm)							부품 Component
	d	L	D	H	L1	L2	M	B
SK50-SLA-32105	32	105	65	70	20	20	M24	M1415SS
SK50-SLA-40105	40	105	65	80	20	25		M1620SS

※ 스피들 내부의 절삭유 공급이 가능한 장비에서 효율적으로 사용할 수 있습니다.

※ It can be used efficiently in equipment capable of cutting oil injection inside the spindle.

TOOL HOLDER



기본구성품(Basic Component)



● DIN69871 / SK Side Lock Oil Feed Type

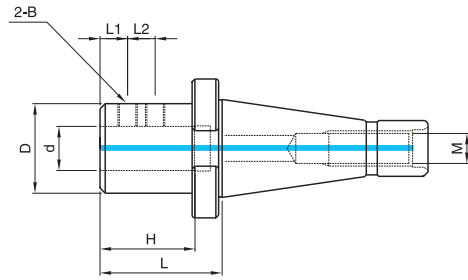
▶ SK-OMS

Code No.	치수 Dimension(mm)								부품 Component
	d	L	D	D1	H	L1	L2	M	B
SK40-OMS-20110	20	110	50	78	50	20	-	M16	M1215SS
SK40-OMS-25125	25	125	50	78	60	20	20		M1215SS
SK40-OMS-32130	32	130	65	98	70	20	20		M1415SS
SK50-OMS-20105	20	105	50	78	50	20	-	M24	M1215SS
SK50-OMS-25120	25	120	50	78	60	20	20		M1215SS
SK50-OMS-32125	32	125	65	98	70	20	20		M1415SS
SK50-OMS-40135	40	135	65	98	80	20	25		M1616SS
SK50-OMS-50165	50	165	90	123	90	35	35		M2020SS

※ 수동 내부 급유형 절삭유 공급 홀더로, 특수 씰을 장착하여 누유없이 장시간 운전이 가능합니다. (Max. 1,800RPM/138페이지참조)

※ It is a manual type internal oil hole holder with a special seal capable of long term operation without leakage. (Max. 1,800RPM/refer to page 138)

SIDE LOCK ARBOR (STANDARD) NT-SLA / NT-OMS



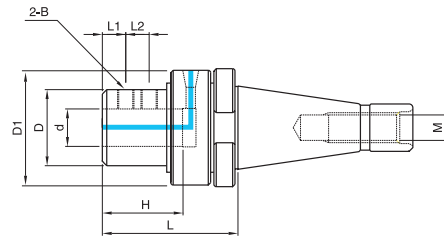
● DIN2080 / NT Side Lock Type

▶ NT-SLA

Code No.	치수 Dimension(mm)							부품 Component
	d	L	D	H	L1	L2	M	B
NT50-SLA-40090	40	90	65	80	20	25	1" - 8UNC	M1620SS
NT50-SLA-40090M	40	90	65	80	20	25	M24	

※ 스피들 내부의 절삭유 공급이 가능한 장비에서 효율적으로 사용할 수 있습니다.

※ It can be used efficiently in equipment capable of cutting oil injection inside the spindle.



기본구성품(Basic Component)



● DIN2080 / NT Side Lock Oil Feed Type

▶ NT-OMS

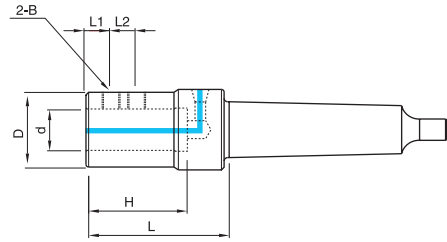
Code No.	치수 Dimension(mm)								부품 Component
	d	L	D	D1	H	L1	L2	M	B
NT40-OMS-20090	20	90	50	78	50	20	-	5/8-11UNC	M1215SS
NT40-OMS-25105	25	105	50	78	60	20	20		M1215SS
NT40-OMS-32110	32	110	65	98	70	20	20		M1415SS
NT50-OMS-20090	20	90	50	78	50	20	-	1" - 8UNC	M1215SS
NT50-OMS-25105	25	105	50	78	60	20	20		M1215SS
NT50-OMS-32105	32	105	65	98	70	20	20		M1415SS
NT50-OMS-40120	40	120	65	98	80	20	25		M1616SS
NT50-OMS-50145	50	145	90	123	90	35	35		M2020SS
NT40-OMS-20090M	20	90	50	78	50	20	-	M16	M1215SS
NT40-OMS-25105M	25	105	50	78	60	20	20		M1215SS
NT40-OMS-32110M	32	110	65	98	70	20	20		M1415SS
NT50-OMS-20090M	20	90	50	78	50	20	-	M24	M1215SS
NT50-OMS-25105M	25	105	50	78	60	20	20		M1215SS
NT50-OMS-32105M	32	105	65	98	70	20	20		M1415SS
NT50-OMS-40120M	40	120	65	98	80	20	25		M1616SS
NT50-OMS-50145M	50	145	90	123	90	35	35		M2020SS

※ 수동 내부 급유형 절삭유 공급 홀더로, 특수 씰을 장착하여 누유없이 장시간 운전이 가능합니다. (Max. 1,800RPM/138페이지참조)

※ It is a manual type internal oil holder with a special seal capable of long term operation without leakage. (Max. 1,800RPM/refer to page 138)



SIDE LOCK ARBOR (STANDARD) MT-SLA / MT-OMS



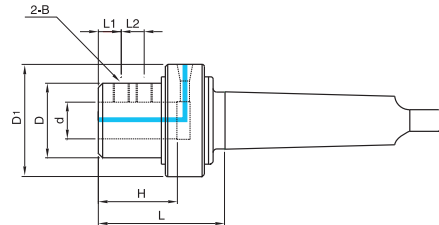
● DIN228B / MT Side Lock Type

▶ MT-SLA

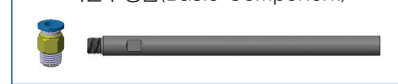
Code No.	치수 Dimension(mm)						부품 Component
	d	L	D	H	L1	L2	B
MT4-SLA-32105	32	105	65	70	20	20	M1415SS
MT4-SLA-40105	40	105	65	80	20	25	M1620SS
MT5-SLA-32105	32	105	65	70	20	20	M1415SS
MT5-SLA-40105	40	105	65	80	20	25	M1620SS
MT5-SLA-50130	50	130	90	90	35	35	M2020SS

※ 코터홈이 있는 경우 별도 지정해 주시기 바랍니다.

※ If a COTTER HOME is present, please make a separate assignment.



기본구성품(Basic Component)



● DIN228B / MT Side Lock Oil Feed Type

▶ MT-OMS

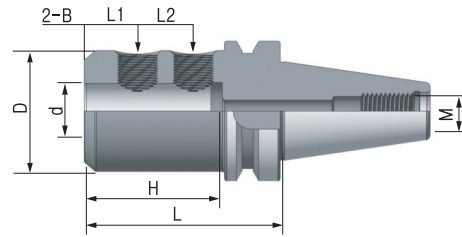
Code No.	치수 Dimension(mm)							부품 Component
	d	L	D	D1	H	L1	L2	B
MT4-OMS-20080	20	80	50	78	50	20	-	M1215SS
MT4-OMS-25095	25	95	50	78	60	20	20	M1215SS
MT4-OMS-32100	32	100	65	98	70	20	20	M1415SS
MT5-OMS-20080	20	80	50	78	50	20	-	M1215SS
MT5-OMS-25095	25	95	50	78	60	20	20	M1215SS
MT5-OMS-32100	32	100	65	98	70	20	20	M1415SS
MT5-OMS-40110	40	110	75	98	80	20	25	M1616SS
MT5-OMS-50140	50	140	90	123	90	35	35	M2020SS
MT6-OMS-32105	32	105	65	98	70	20	20	M1415SS
MT6-OMS-40120	40	120	75	98	80	20	25	M1616SS
MT6-OMS-50140	50	140	90	123	90	35	35	M2020SS

※ 수동 내부 급유형 절삭유 공급 홀더로, 특수 씬을 장착하여 누유없이 장시간 운전이 가능합니다. (Max. 1,800RPM/138페이지참조)

※ It is a manual type internal oil hole holder with a special seal capable of long term operation without leakage. (Max. 1,800RPM/refer to page 138)

SIDE LOCK ARBOR (WELDON-B)

BT-WSA / BT-CMS



● MAS / BT Weldon-B Type

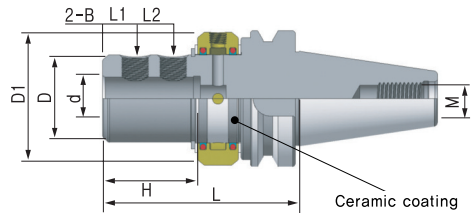
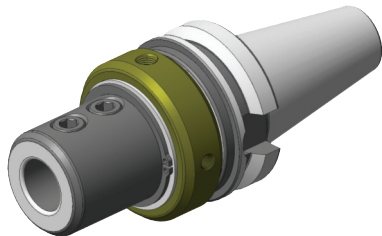
▶ BT-WSA

Code No.	치수 Dimension(mm)							부품 Component
	d	L	D	H	L1	L2	M	B
BT40-WSA-20070B	20	70	50	50	25	-	M16	M1617SS-P15
BT40-WSA-25090B	25	90	55	60	24	25		M1817SS-P20
BT40-WSA-32095B	32	95	65	70	24	28		M2017SS-P20
BT50-WSA-20085B	20	85	50	50	25	-	M24	M1617SS-P15
BT50-WSA-25105B	25	105	55	60	24	25		M1817SS-P20
BT50-WSA-32110B	32	110	65	70	24	28		M2017SS-P20
BT50-WSA-40120B	40	120	80	80	30	32		M2020SS-P20
BT50-WSA-50130B	50	130	90	80	35	35		M2420SS-P20

※ 스펀들 내부의 절삭유 공급이 가능한 장비에서 효율적으로 사용할 수 있습니다.

※ It can be used efficiently in equipment capable of cutting oil injection inside the spindle.

TOOL HOLDER



● MAS / BT Weldon-B Oil Feed Type

▶ BT-CMS



Code No.	치수 Dimension(mm)								부품 Component
	d	L	D	D1	H	L1	L2	M	B
BT40-CMS-20110B	20	110	50	83	50	25	-	M16	M1617SS-P15
BT40-CMS-25130B	25	130	55	88	60	24	25		M1817SS-P20
BT40-CMS-32135B	32	135	65	98	70	24	28		M2017SS-P20
BT50-CMS-20120B	20	120	50	83	50	25	-	M24	M1617SS-P15
BT50-CMS-25140B	25	140	55	88	62	24	25		M1817SS-P20
BT50-CMS-32145B	32	145	65	98	70	24	28		M2017SS-P20
BT50-CMS-40155B	40	155	80	113	80	30	32		M2020SS-P20
BT50-CMS-50170B	50	170	90	123	80	35	35		M2420SS-P20

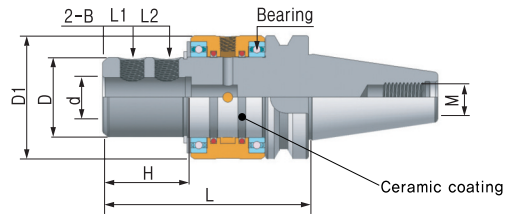
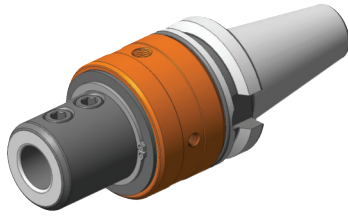
※ 수동 내부 급유형 절삭유 공급 홀더로, 특수 씰을 장착하여 누유없이 장시간 운전이 가능합니다. (Max. 2,000RPM/138페이지참조)

※ 오일캡 실제 색상은 검정(lack Oxid)입니다.

※ It is a manual type internal oil hole holder with a special seal capable of long term operation without leakage. (Max. 2,000RPM/refer to page 138)

※ The actual color of the Oil Cap is black

SIDE LOCK ARBOR (WELDON-B) BT-CMB / BT-CAW

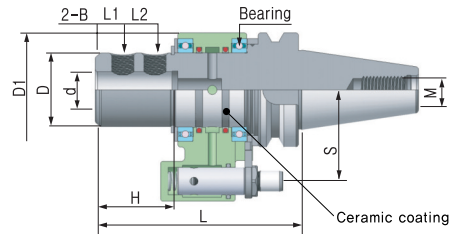
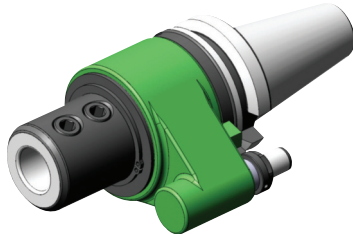


● MAS / BT Weldon-B Oil Feed Bearing Type ▶ BT-CMB

Code No.	치수 Dimension(mm)								부품 Component	
	d	L	D	D1	H	L1	L2	M	B	
BT40-CMB-20135B	20	135	50	82	50	25	-	M16	M1617SS-P15	
BT40-CMB-25155B	25	155	55	90	60	24	25		M1817SS-P20	
BT40-CMB-32165B	32	165	65	100	70	24	28		M2017SS-P20	
BT50-CMB-20145B	20	145	50	82	50	25	-	M24	M1617SS-P15	
BT50-CMB-25165B	25	165	55	90	60	24	25		M1817SS-P20	
BT50-CMB-32170B	32	170	65	100	70	24	28		M2017SS-P20	
★ BT50-CMB-40180B	40	180	65	100	80	30	32		M2020SS-P20	
★ BT50-CMB-50190B	50	190	65	100	80	35	35		M2420SS-P20	

※ 수동 내부 급유형 절삭유 공급 홀더로, 특수 씬을 장착하여 누유없이 장시간 운전이 가능합니다. (Max. 4,000RPM/138페이지참조)
 ※ 오일캡 실제 색상은 검정(lack Oxid)입니다. The actual color of the Oil Cap is black
 ※ It is a manual type internal oil hole holder with a special seal capable of long term operation without leakage. (Max. 4,000RPM/refer to page 138)

★ : 결합형(드릴체결부+스핀드부)
 ★ : Couple type (Drill joint + Spindle joint)



● MAS / BT Weldon-B Auto Matic Type ▶ BT-CAW

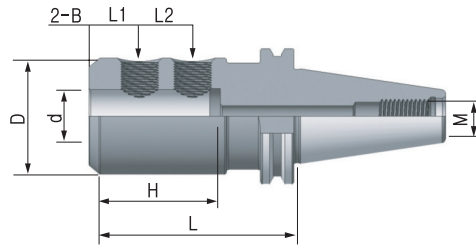
Code No.	치수 Dimension(mm)									부품 Component	
	d	L	D	D1	H	L1	L2	M	S	B	
BT40-CAW-20130B	20	130	50	80	50	25	-	M16	65	M1617SS-P15	
★ BT40-CAW-25150B	25	150	58	80	60	24	25			M1817SS-P20	
★ BT40-CAW-32155B	32	155	65	80	70	24	28			M2017SS-P20	
BT50-CAW-20150B	20	150	50	100	50	25	-	M24	80	M1617SS-P15	
BT50-CAW-25170B	25	170	55	100	60	24	25			M1817SS-P20	
BT50-CAW-32180B	32	180	65	100	70	24	28			M2017SS-P20	
★ BT50-CAW-40190B	40	190	65	100	80	30	32			M2020SS-P20	
★ BT50-CAW-50200B	50	200	65	100	80	35	35			M2420SS-P20	

※ 자동 툴체인지(ATC)가 가능한 툴홀더로, 사용 전에 위치결정핀(Position Pin) 높이와 각도를 맞추어 사용합니다. (139페이지)
 ※ 베어링과 내열, 내마모성이 우수한 씬(Seal)을 장착하여, 고속에서도 누유 없이 장시간 안정적인 운전이 가능합니다. (Max. 4,000RPM)
 ※ It is a tool holder capable of Automatic Tool Change (ATC). Adjust the height and angle of the Position Pin prior to use. (P.139)
 ※ It has a bearing and seal with outstanding heat-resistant and abrasion resistive properties, making it capable of stable operation for extended durations without leakage even in high speeds. (Max. 4,000RPM)



SIDE LOCK ARBOR (WELDON-B)

SK-WSA / SK-CMS

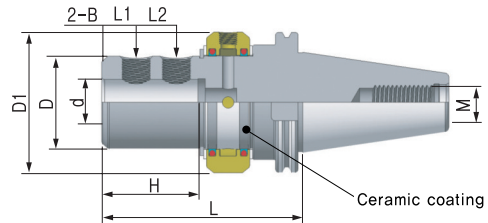
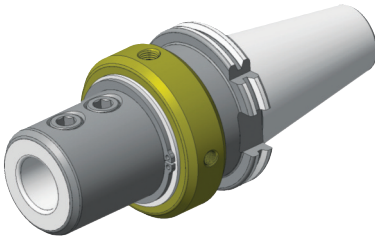


- DIN69871 / SK Weldon-B Type
- ▶ SK-WSA

Code No.	치수 Dimension(mm)							부품 Component
	d	L	D	H	L1	L2	M	B
SK40-WSA-20065B	20	65	50	50	25	-	M16	M1617SS-P15
SK40-WSA-25100B	25	100	55	60	24	25		M1817SS-P20
SK40-WSA-32105B	32	105	65	70	24	28		M2017SS-P20
SK50-WSA-20065B	20	65	50	50	25	-	M24	M1617SS-P15
SK50-WSA-25100B	25	100	55	60	24	25		M1817SS-P20
SK50-WSA-32105B	32	105	65	70	24	28		M2017SS-P20
SK50-WSA-40110B	40	110	80	80	30	32		M2020SS-P20
SK50-WSA-50125B	50	125	90	80	35	35		M2420SS-P20

- ※ 스피들 내부의 절삭유 공급이 가능한 장비에서 효율적으로 사용할 수 있습니다.
- ※ It can be used efficiently in equipment capable of cutting oil injection inside the spindle.

TOOL HOLDER



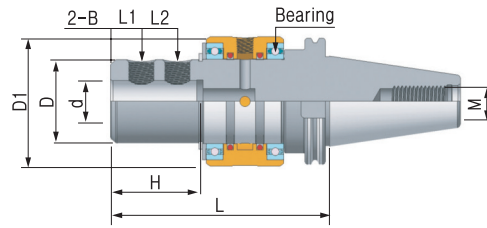
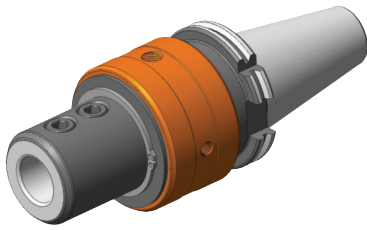
- DIN69871 / SK Weldon-B Oil Feed Type
- ▶ SK-CMS



Code No.	치수 Dimension(mm)								부품 Component
	d	L	D	D1	H	L1	L2	M	B
SK40-CMS-20115B	20	115	50	83	50	25	-	M16	M1617SS-P15
SK40-CMS-25135B	25	135	55	88	60	24	25		M1817SS-P20
SK40-CMS-32140B	32	140	65	98	70	24	28		M2017SS-P20
SK50-CMS-20115B	20	115	50	83	50	25	-	M24	M1617SS-P15
SK50-CMS-25135B	25	135	55	88	62	24	25		M1817SS-P20
SK50-CMS-32140B	32	140	65	98	70	24	28		M2017SS-P20
SK50-CMS-40150B	40	150	80	113	80	30	32		M2020SS-P20
SK50-CMS-50165B	50	165	90	123	80	35	35		M2420SS-P20

- ※ 수동 내부 급유형 절삭유 공급 홀더로, 특수 씬을 장착하여 누유없이 장시간 운전이 가능합니다. (Max. 2,000RPM/138페이지참조)
- ※ 오일캡 실제 색상은 검정(lack Oxid)입니다.
- ※ It is a manual type internal oil holder with a special seal capable of long term operation without leakage. (Max. 2,000RPM/refer to page 138)
- ※ The actual color of the Oil Cap is black

SIDE LOCK ARBOR (WELDON-B) SK-CMB



- DIN69871 / SK Weldon-B Oil Feed Bearing Type
- ▶ SK-CMB



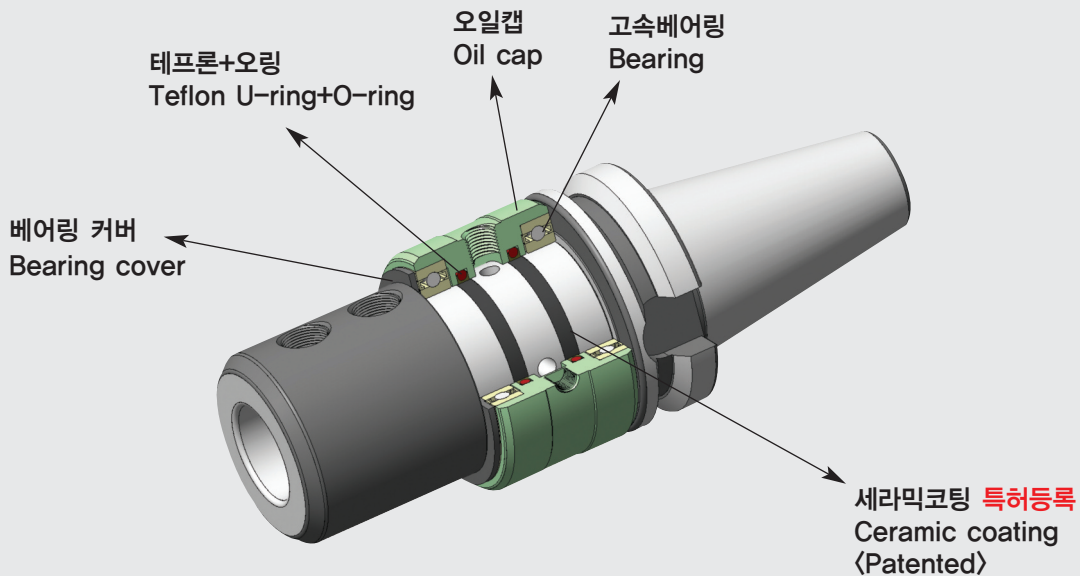
Code No.	치수 Dimension(mm)								부품 Component
	d	L	D	D1	H	L1	L2	M	B
SK40-CMB-20145B	20	145	50	82	50	25	-	M16	M1617SS-P15
SK40-CMB-25165B	25	165	55	90	60	24	25		M1817SS-P20
SK40-CMB-32170B	32	170	65	100	70	24	28		M2017SS-P20
SK50-CMB-20145B	20	145	50	82	50	25	-	M24	M1617SS-P15
SK50-CMB-25165B	25	165	55	90	62	24	25		M1817SS-P20
SK50-CMB-32170B	32	170	65	100	70	24	28		M2017SS-P20
★ SK50-CMB-40180B	40	180	80	100	80	30	32		M2020SS-P20
★ SK50-CMB-50190B	50	190	90	100	80	35	35		M2420SS-P20

※ 수동 내부 급유형 절삭유 공급 홀더로, 특수 씰을 장착하여 누유없이 장시간 운전이 가능합니다. (Max. 4,000RPM/138페이지참조)

※ 오일캡 실제 색상은 검정(lack Oxid)입니다. The actual color of the Oil Cap is black
 ※ It is a manual type internal oil hole holder with a special seal capable of long term operation without leakage. (Max. 4,000RPM/refer to page 138)

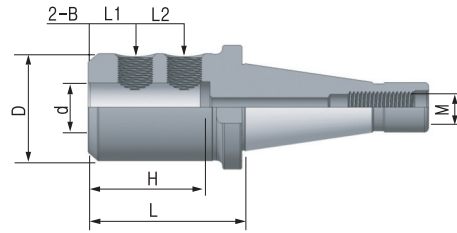
★ : 결합형(드릴체결부+스핀드부)
 ★ : Couple type (Drill joint + Spindle joint)

CMB ARBOR STRUCTURE



SIDE LOCK ARBOR (WELDON-B)

NT-WSA / NT-CMS



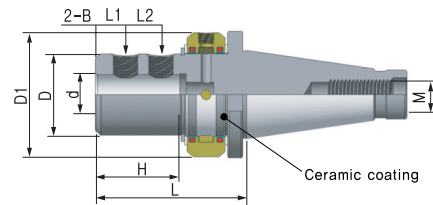
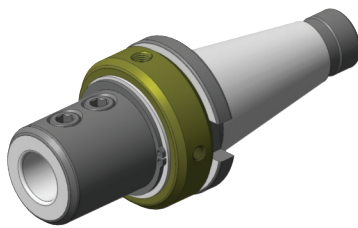
● DIN2080 / NT Weldon-B Type

▶ NT-WSA

Code No.	치수 Dimension(mm)							부품 Component	
	d	L	D	H	L1	L2	M	B	
NT40-WSA-20060B	20	60	50	50	25	-	5/8"-11UNC	M1617SS-P15	
NT40-WSA-25080B	25	80	55	60	24	25		M1817SS-P20	
NT40-WSA-32085B	32	85	65	70	24	28		M2017SS-P20	
NT50-WSA-20065B	20	65	50	50	25	-	1"-8UNC	M1617SS-P15	
NT50-WSA-25085B	25	85	55	60	24	25		M1817SS-P20	
NT50-WSA-32090B	32	90	65	70	24	28		M2017SS-P20	
NT50-WSA-40100B	40	100	80	80	30	32		M2020SS-P20	
NT50-WSA-50110B	50	110	90	80	35	35		M2420SS-P20	
NT40-WSA-20060MB	20	60	50	50	25	-	M16	M1617SS-P15	
NT40-WSA-25080MB	25	80	55	60	24	25		M1817SS-P20	
NT40-WSA-32085MB	32	85	65	70	24	28		M2017SS-P20	
NT50-WSA-20065MB	20	65	50	50	25	-	M24	M1617SS-P15	
NT50-WSA-25085MB	25	85	55	60	24	25		M1817SS-P20	
NT50-WSA-32090MB	32	90	65	70	24	28		M2017SS-P20	
NT50-WSA-40100MB	40	100	80	80	30	32		M2020SS-P20	
NT50-WSA-50110MB	50	110	90	80	35	35		M2420SS-P20	

※ 스펀들 내부의 절삭유 공급이 가능한 장비에서 효율적으로 사용할 수 있습니다.

※ It can be used efficiently in equipment capable of cutting oil injection inside the spindle.



기본구성품(Basic Component)



● DIN2080 / NT Weldon-B Oil Feed Type

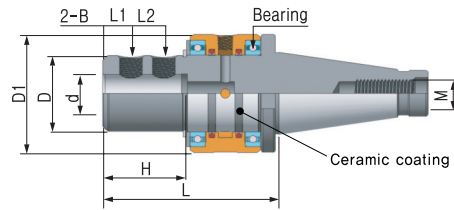
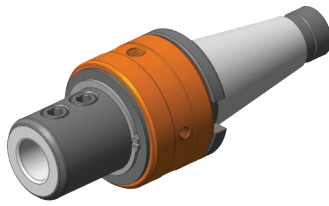
▶ NT-CMS

Code No.	치수 Dimension(mm)								부품 Component	
	d	L	D	D1	H	L1	L2	M	B	
NT40-CMS-20095B	20	95	50	83	50	25	-	5/8"-11UNC	M1617SS-P15	
NT40-CMS-25115B	25	115	55	88	60	24	25		M1817SS-P20	
NT40-CMS-32120B	32	120	65	98	70	24	28		M2017SS-P20	
NT50-CMS-20095B	20	95	50	83	50	25	-	1"-8UNC	M1617SS-P15	
NT50-CMS-25115B	25	115	55	88	62	24	25		M1817SS-P20	
NT50-CMS-32120B	32	120	65	98	70	24	28		M2017SS-P20	
NT50-CMS-40130B	40	130	80	113	80	30	32		M2020SS-P20	
NT50-CMS-50140B	50	140	90	123	80	35	35		M2420SS-P20	
NT40-CMS-20095MB	20	95	50	83	50	25	-	M16	M1617SS-P15	
NT40-CMS-25115MB	25	115	55	88	60	24	25		M1817SS-P20	
NT40-CMS-32120MB	32	120	65	98	70	24	28		M2017SS-P20	
NT50-CMS-20095MB	20	95	50	83	50	25	-	M24	M1617SS-P15	
NT50-CMS-25115MB	25	115	55	88	62	24	25		M1817SS-P20	
NT50-CMS-32120MB	32	120	65	98	70	24	28		M2017SS-P20	
NT50-CMS-40130MB	40	130	80	113	80	30	32		M2020SS-P20	
NT50-CMS-50140MB	50	140	90	123	80	35	35		M2420SS-P20	

※ 오일캡 실제 색상은 검정(lack Oxid)입니다. The actual color of the Oil Cap is black



SIDE LOCK ARBOR (WELDON-B) NT-CMB



- DIN2080 / NT Weldon-B Oil Feed Bearing Type
- ▶ NT-CMB



Code No.	치수 Dimension(mm)								부품 Component
	d	L	D	D1	H	L1	L2	M	B
NT40-CMB-20125B	20	125	50	82	50	25	-	5/8"-11UNC	M1617SS-P15
NT40-CMB-25145B	25	145	55	90	60	24	25		M1817SS-P20
NT40-CMB-32150B	32	150	65	100	70	24	28		M2017SS-P20
NT50-CMB-20125B	20	125	50	82	50	25	-	1"-8UNC	M1617SS-P15
NT50-CMB-25145B	25	145	55	90	60	24	25		M1817SS-P20
NT50-CMB-32150B	32	150	65	100	70	24	28		M2017SS-P20
★NT50-CMB-40160B	40	160	65	100	80	30	32		M2020SS-P20
★NT50-CMB-50170B	50	170	65	100	80	35	35	M2420SS-P20	
NT40-CMB-20125MB	20	125	50	82	50	25	-	M16	M1617SS-P15
NT40-CMB-25145MB	25	145	55	90	60	24	25		M1817SS-P20
NT40-CMB-32150MB	32	150	65	100	70	24	28		M2017SS-P20
NT50-CMB-20125MB	20	125	50	82	50	25	-	M24	M1617SS-P15
NT50-CMB-25145MB	25	145	55	90	60	24	25		M1817SS-P20
NT50-CMB-32150MB	32	150	65	100	70	24	28		M2017SS-P20
★NT50-CMB-40160MB	40	160	65	100	80	30	32		M2020SS-P20
★NT50-CMB-50170MB	50	170	65	100	80	35	35		M2420SS-P20

※ 수동 내부 급유형 절삭유 공급 홀더로, 특수 씬을 장착하여 누유없이 장시간 운전이 가능합니다. (Max. 4,000RPM/138페이지참조)

※ 오일캡 실제 색상은 검정(lack Oxid)입니다. The actual color of the Oil Cap is black
 ※ It is a manual type internal oil hole holder with a special seal capable of long term operation without leakage. (Max. 4,000RPM/refer to page 138)

★ : 결합형(드릴체결부+스핀드부)

★ : Couple type (Drill joint + Spindle joint)

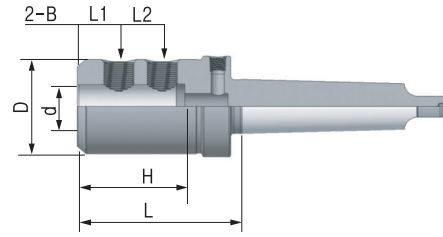
CMB, CAW ARBOR CHARACTERISTIC

- ▣ 테프론과의 마찰부를 세라믹 코팅처리하여 아바 수명이 놀랍게 향상되었습니다.(특허등록)
- ▣ 특수성분 테프론 사용으로 미끄럼성을 높였습니다.
- ▣ 베어링 장착으로 고속 회전(실내경 ø65의 경우 max. 4,000)이 가능합니다.
- ▣ 샹크체결은 DIN규격을 준수하였습니다.
- ▣ As the part of arbor body touched with teflon was treated by ceramic coating, The arbor life is much more upgraded
- ▣ The sliding nature of teflon is improved by adding the special ingredient.
- ▣ It is possible to turn with high speed by installing the bearings.(max. 4,000)
- ▣ The shank locking system was followed DIN regulation.



SIDE LOCK ARBOR (WELDON-B)

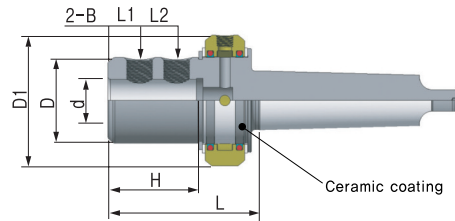
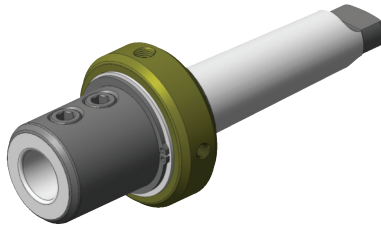
MT-WSA / MT-CMS



● DIN228B / MT Weldon-B Type
▶ MT-WSA

Code No.	치수 Dimension(mm)						부품 Component
	d	L	D	H	L1	L2	B
MT4-WSA-20075B	20	75	50	50	25	-	M1617SS-P15
MT4-WSA-25095B	25	95	55	60	24	25	M1817SS-P20
MT4-WSA-32105B	32	105	65	70	24	28	M2017SS-P20
MT5-WSA-20080B	20	80	50	50	25	-	M1617SS-P15
MT5-WSA-25100B	25	100	55	60	24	25	M1817SS-P20
MT5-WSA-32105B	32	105	65	70	24	28	M2017SS-P20
MT5-WSA-40115B	40	115	80	80	30	32	M2020SS-P20
MT6-WSA-32105B	32	105	65	50	25	-	M2017SS-P20
MT6-WSA-40115B	40	115	80	60	24	25	M2020SS-P20
MT6-WSA-50125B	50	125	90	70	24	28	M2420SS-P20

※ 코터홈이 있는 경우 별도 지정해 주시기 바랍니다.
※ If a COTTER HOME is present, please make a separate assignment.



● DIN228B / MT Weldon-B Oil Feed Type
▶ MT-CMS

Code No.	치수 Dimension(mm)							부품 Component
	d	L	D	D1	H	L1	L2	B
MT4-CMS-20085B	20	85	50	83	50	25	-	M1617SS-P15
MT4-CMS-25110B	25	110	55	88	60	24	25	M1817SS-P20
MT4-CMS-32115B	32	115	65	88	70	24	28	M2017SS-P20
MT5-CMS-25110B	25	110	55	88	60	24	25	M1617SS-P15
MT5-CMS-32115B	32	115	65	98	70	24	28	M1817SS-P20
MT5-CMS-40125B	40	125	80	98	80	30	32	M2017SS-P20
MT6-CMS-32120B	32	120	65	98	50	25	-	M2017SS-P20
MT6-CMS-40130B	40	130	80	98	60	24	25	M2020SS-P20
MT6-CMS-50140B	50	140	90	98	70	24	28	M2420SS-P20

※ 오일캡 실제 색상은 검정(lack Oxid)입니다.
※ The actual color of the Oil Cap is black

