

Double Piston Pneumatic Swing Clamp

Model WHD

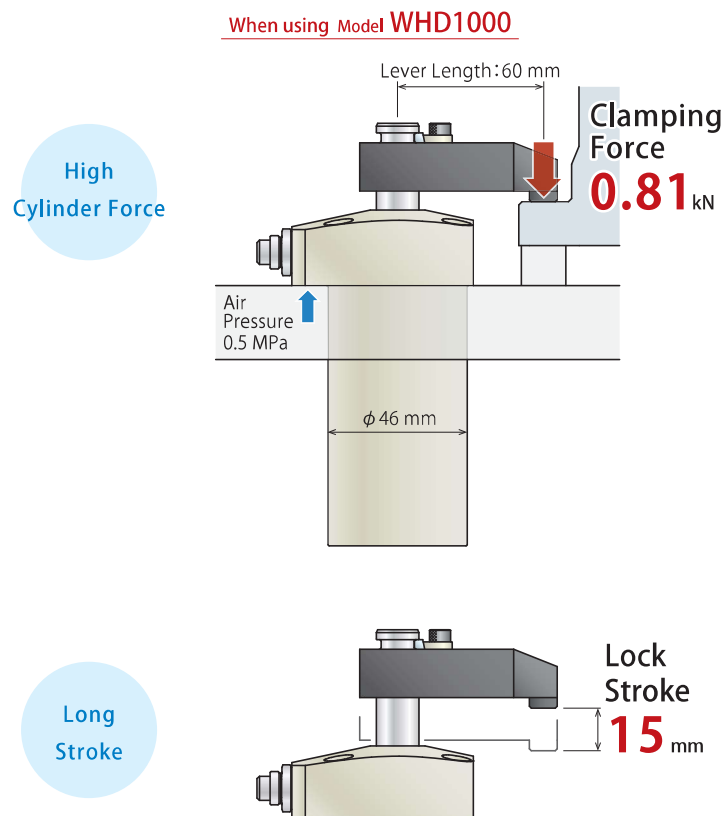


Advanced pneumatic swing clamp exerts higher force with double piston mechanism.

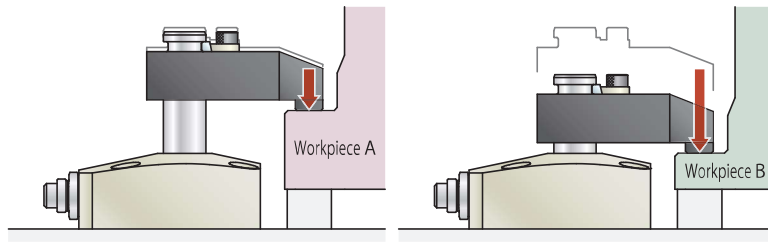
PAT.

Features

Double Piston Mechanism allows for both higher cylinder force and longer stroke of pneumatic swing clamp.



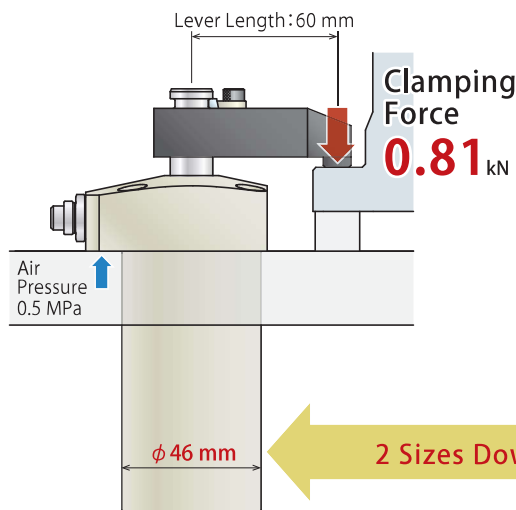
Long Stroke allows for different clamping heights of workpieces on the same application.



Compared to pneumatic swing clamp Model WHA, it exerts equivalent clamping force even with downsized body.

Double Piston Pneumatic Swing Clamp
Long Stroke Model

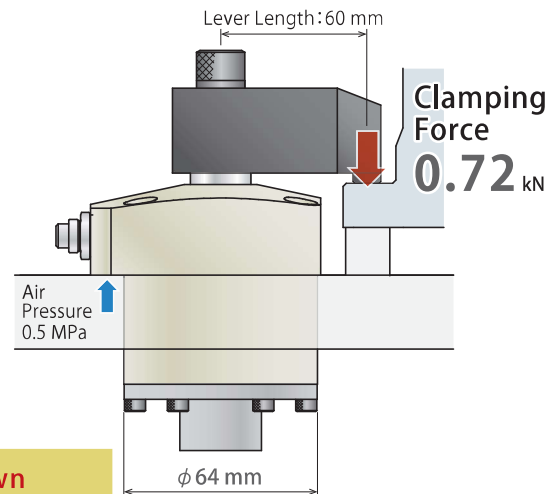
When using Model WHD1000
(Lock Stroke: 15 mm)



Downsized

Pneumatic Swing Clamp

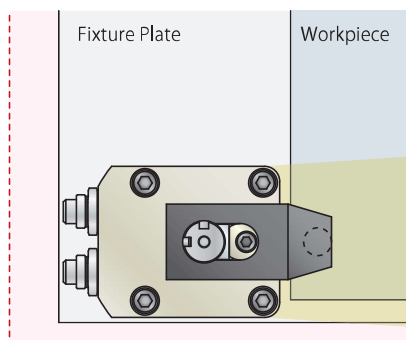
When using Model WHA0500
(Lock Stroke: 10 mm)



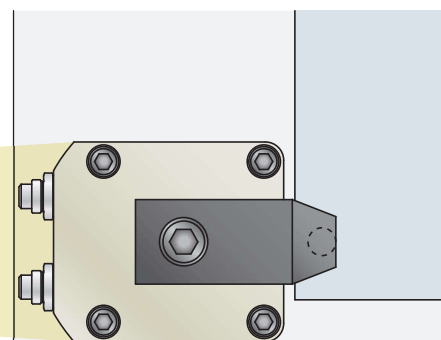
2 Sizes Down

Enables smaller footprint and lighter weight of application.

Double Piston Pneumatic Swing Clamp
Long Stroke Model



Pneumatic Swing Clamp



Smaller Footprint of Fixture Plate

Compact Light

High-Power Series

Pneumatic Series

Hydraulic Series

Valve / Coupler Hydraulic Unit

Manual Operation Accessories

Cautions / Others

Pneumatic Hole Clamp

SWA

Pneumatic Swing Clamp

WHA

Double Piston Pneumatic Swing Clamp

WHD

Pneumatic Link Clamp

WCA

Air Flow Control Valve

BZW

Pneumatic Expansion Locating Pin

VWM

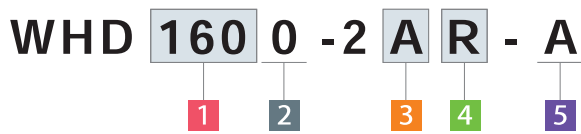
VWK

Pneumatic Sensor Pin

WWA

Model No. Indication

Clamp Body



1 Cylinder Force

- 060** : Cylinder Force 0.62 kN (at Air Pressure 0.5MPa)
 - 100** : Cylinder Force 0.96 kN (at Air Pressure 0.5MPa)
 - 160** : Cylinder Force 1.44 kN (at Air Pressure 0.5MPa)
 - 250** : Cylinder Force 2.12 kN (at Air Pressure 0.5MPa)
 - 400** : Cylinder Force 2.97 kN (at Air Pressure 0.5MPa)
- ※ Cylinder force is different from clamping force.

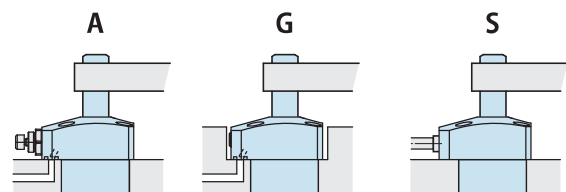
2 Design No.

0 : Revision Number

3 Piping Method

- A** : Gasket Option (With Ports for Speed Controller)
- G** : Gasket Option (with R Thread Plug)
- S** : Piping Option (Rc Thread)

※ Speed control valve (BZW) is sold separately.
Please refer to P.309.



Gasket Option

Piping Option

With R Thread Plug (able to attach Speed Control Valve) (Order the valve separately) Recommended : BZW-B	With R Thread Plug	Rc Thread No Gasket Port
--	--------------------	-----------------------------

4 Swing Direction when Clamping

- R** : Clockwise
- L** : Counter-Clockwise



5 Option

- A** : Quick Change Lever Option A

※ Please contact us for details of other options.

